

**Mount  
Waverley  
North Primary  
School**

**Term 2**

**2009**

### **Dates for your diary**

May

21/5 ~ Excursion

June

8/6 ~ Queen's Birthday

11/6 ~ Open Night

12/6 ~ Curriculum Day

22/6 ~ Parent Teacher  
Night

## **Environment & Climate Change**

The theme for term two is an exploration of different environments and the affect of human impact.

### Environment Workshops

This term students have the opportunity to select one of the following environments to explore; rainforest, oceans, coastal and the Arctic/Antarctic. Each week children have two one hour sessions which encourage the students to develop an understanding of the natural state of their selected environment and how they have been altered due to climate change and negative human impact.

### Excursions

In May students will go on an excursion with their environment workshop class and teacher. Students learning about:

- the coastal environment will go to the Melbourne Aquarium where they will learn about the human impact on the environment.
- the rainforest will go on a field trip to explore natural flora and fauna in the Yarra Valley.
- the Arctic/Antarctic will visit the museum and go to IMAX where they will watch a feature documentary on Antarctica.
- the oceans environment will go to the Melbourne Aquarium where they will see first hand the different sea creatures that inhabit the deep seas.

## **What's happening in English?**

### Reading

Reading activities this term will be integrated with our unit on environment, climate change and sustainable practices.

Children will be involved in reading group activities where comprehension and reading fluency will be developed.

Reading sessions will involve small group rotations involving novel and author studies, computer based activities, comprehension activities and reciprocal reading.

We have also timetabled regular sessions of independent reading where children will be reading books matched to their level of ability in the Lexile Reading Scheme. We are expecting children to read regularly at home and have supplied a reading log. We encourage children to read to someone at home.

### Spelling

Children will be placed into spelling groups which will cater for their needs. Weekly sessions will focus on developing spelling strategies.

Children will have weekly spelling words to learn and will be tested weekly.



# What's happening in English?

## Writing

- This term we are offering a range of different writing opportunities. Students this term will participate in a 4 week poetry course, in which they will develop knowledge and skills in creating their own poems, such as, limericks, ballads, cinquain, haikus and starbursts. The students will produce their own poetry booklet, which will be included in their portfolio.
- The elective writing stream this term provides students with the skills to write an explanation text. The students can choose to learn about 4 different alternative energy sources in these workshops and then write an explanation piece about their chosen field of study.

## Speaking and Listening

- In home groups children will practice attentive listening through Tribes activities and this term they will have the opportunity to recite some of their own poems.

# What's happening in Mathematics

## **Number:**

Students will continue working in their allocated number group on Monday, Tuesday and Wednesday.

This term students will be focussing on extending their understanding of operations with whole and decimal numbers. A particular focus will be on developing students ability to solve written multiplication and division algorithms.

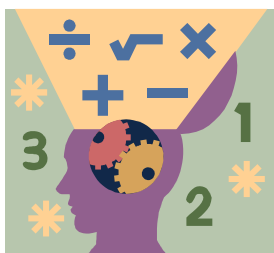
## **Space:**

This term students have the opportunity to explore both line and rotational symmetry, the reflection and rotation of shapes and objects, leading into finding shapes that will tessellate.

## **Measurement, Chance & Data**

In Measurement, students will be Learning about perimeter, area and capacity. Students will be exploring the relationship between perimeter and area. Students will develop simple procedures to determine the perimeter and area of simple shapes (for example, counting squares in a grid to determine area).

In Chance and Data students will be learning about the mean, median and mode and how to represent information on graphs.



## **Redesign Level 4: Building Project**

This term students have been asked to design a brand new level 4 learning area. They are required to draw a 2 dimensional floor plan with clearly defined learning spaces and then create a 3 dimensional model of the exterior of the building.



# Specialist Areas

## **ART WITH MISS PACEWICZ**

Level 4 will experiment in creating and making with Terracotta Clay as well as continuing to hone in on skills with lead pencils and mixing and blending with coloured mediums. To coincide with their poetry during this term, students will also be creating detailed Mandalas to tell a story.

## **GERMAN WITH FRAU IMBERGER**

This term in the German program Level 4 students will be exploring Europe. They will follow the journey of *Paule Puhmann* finding out about various European countries, their location, flags, currency, cities and rivers. They will be participating in choral use of language, as well as individual reading of increasingly complex texts. They

will be expected to read aloud effectively and apply knowledge of pronunciation and punctuation. During oral activities they will be encouraged to speak at an appropriate volume, using as correct as accent as possible. Written tasks will be more complex as students use their knowledge to construct sentences which are increasingly correct.

## **SPORT WITH MR NAUGHTIN**

In Term 2 Level 4 students will be participating in units on volleyball, football and athletic skills during PE lessons. The interschool sports for winter sport are soccer, netball, football, rounders and tee-ball. Winter sport is due to start next week.

## **SCIENCE WITH LEVEL 4 TEACHERS**

This term students have the opportunity to participate in an 8 week science workshop. They have elected to be apart of one of the following areas:

- colour and light
- air and flight
- batteries and bulbs
- robotics
- chemical and physical changes

In these workshops students will develop their understanding of scientific practices and outcomes. These workshops are held on a Monday afternoon.