

# Mount Waverley North NEWS

Aspire • Believe • Achieve

**Postal Address:** Marcus Avenue, Mount Waverley, VIC, 3149

**Telephone:** (03) 9802 3168 **Facsimile:** (03) 9886 1571

**Email:** [mt.waverley.north.ps@education.vic.gov.au](mailto:mt.waverley.north.ps@education.vic.gov.au)

**Website:** [www.mtwavnth.vic.edu.au](http://www.mtwavnth.vic.edu.au)

## Important Dates

### MARCH

#### **Monday 6<sup>th</sup>**

-Getting to know you Parent Teacher Interviews begin

#### **Thursday 9<sup>th</sup>**

-House Athletics Day (Y3-6)

#### **Friday 10<sup>th</sup>**

-Curriculum Day (No students at school – Team Kids will be available)

#### **Monday 13<sup>th</sup>**

Labour Day – No School

**Wednesday 15<sup>th</sup> – Monday 20<sup>th</sup>**  
NAPLAN

#### **Monday 20<sup>th</sup>**

AGM & School Council

#### **Tuesday 21<sup>st</sup>**

Down Syndrome Awareness Day

#### **Wednesday 22<sup>nd</sup> – 29<sup>th</sup>**

Book Fair

#### **Friday 24<sup>th</sup>**

Interschool Sport

#### **Monday 27<sup>th</sup>– Friday 31<sup>st</sup>**

Harmony Week

#### **Thursday 30<sup>th</sup>**

5/6 Parent Life Ed Online Information Session

## Principal Team Report

### School Council Elections

Thank you to those parents who have nominated to be members of the 2023 Mount Waverley North Primary School, School Council. Due to the number of nominations exceeding the number of Parent Category vacancies, a ballot is currently being conducted to select successful candidates.



A Ballot Paper and return envelopes were sent home to each parent of students at MWNPS on Wednesday 1<sup>st</sup> March.

### Casting a Vote

Each voter must complete a ballot paper by placing a mark next to the name of each candidate standing for election for whom the voter wishes to vote, up to the number of vacant positions. There are 4 vacant positions. To cast a vote, the voter must:

- Place the completed ballot paper in a blank envelope and place the blank envelope in a second envelope with the voter's name and address printed on the back of this envelope and post the envelope in the ballot box situated at the School Office before Thursday 9<sup>th</sup> March at 12.00pm.

The vote count will take place on Thursday 9<sup>th</sup> March, with the declaration of poll on Friday, 10<sup>th</sup> March. A special School Council Meeting will then be held on the evening of Monday, 20<sup>th</sup> March.

### ***What is a School Council and what does it do?***

All Government schools in Victoria have a School Council. They are legally constituted bodies that are given powers to set the key directions of a school within centrally provided guidelines. In doing this, a School Council is able to directly influence the quality of education that the school provides for its students.

### ***Why is Parent membership so important?***

Parents on School Councils provide important viewpoints and have valuable skills that can shape the future direction of the school. Should parents wish to further discuss their involvement in the School Council please do not hesitate to contact the school.

## Term Dates

**Term 1, 2023:** 30 Jan - 6 Apr

**Term 2, 2023:** 24 Apr - 23 Jun

**Term 3, 2023:** 10 Jul - 15 Sep

**Term 4, 2023:** 2 Oct - 20 Dec



# Mount Waverley North NEWS

Aspire • Believe • Achieve

## 学校理事会选举 (School Council Elections)

感谢那些提名成为 2023 年 Mount Waverley North Primary School 学校理事会成员的家长。由于目前提名人的数量超过理事会相关类别职位空缺的数量，目前我校正拟以选举投票的方式选出成功的候选人。

学校已将选票和回邮信封于 3 月 1 日星期三交由学生带回家以发到每位 MWNPSS 的学生家长手中。

## 完成投票

每位选民必须在选票上，其希望投票的参选候选人姓名旁边，打上记号。每个选民投票选择的参选人数量不能超过现有空缺职位数。目前我校理事会会有 4 个空缺职位需要进行投票。完成选择后的各位选民必须：

☑ 将填妥的选票放入一个空白信封中，并将此信封放入第二个信封中，第二信封背面需印有选民的姓名和地址。家长们需在 3 月 9 日星期四中午 12 点之前将信封交到位于学校办公室 office 前台，并投入学校设置的投票箱里。（家长可交给自己的孩子，并敦促他们交给办公室或班主任）。

计票活动将于 3 月 9 日星期四进行，并于 3 月 10 日星期五宣布投票结果。3 月 20 日星期一晚上，我校将召开一次特别学校理事会会议。

## 'Getting-to-Know-You' Parent-Teacher Meetings

Our Term 1 'Getting to Know You' Parent Teacher Meetings are taking place, this week beginning Monday 6th March.

Each year level will have **different time and day availability**.

Please see below:

**Year 5/6** Monday 6th March 1:30 - 6:00pm

**Year 3/4** Monday 6th March 3:45 - 6:00pm & Wednesday 8th March 1:30 - 3:30pm

**Year 1/2** Monday 6th March 3:45 - 6:00pm & Tuesday 7th March 1:30 - 3:30pm

**Prep** Monday 6th March 3:45 - 6:00pm & Thursday 9th March 1:30 - 3:30pm

For families requiring an Interpreter to be present at the Parent Teacher Meetings, these will be held on Tuesday, 14th March, from 9am- 4pm.

If you would like to book a 15 minute session with an Interpreter present, please contact the school office directly.

To access your child's teachers virtual Webex Room, at your booked time slot, please access the link posted on Compass.

We ask that you access the link a few minutes before your booked time.

• You may be prompted to download the Cisco Webex Meetings App depending on the device you are using. Please allow time for this in advance.

• Once you have entered the room, you will be placed in a 'waiting room' and the teacher will let you in to the meeting at your allocated time.

We look forward to sharing your child's growth and achievement with you over the coming days.

### Road Safety

As our school community grows the lack of car parking around the school is an issue that requires parents to give due consideration. Where possible families are encouraged to walk or ride on bikes or scooters to ease congestion. The roads directly around the school, Josephine Avenue and Marcus Avenue, are regularly monitored by council parking officers and Mount Waverley Police due to the number of parking violations taking place. Please be warned.

**Parents also need to be aware students can only alight from a vehicle if it is parked, and not at the junctions or on the roads around the school. It is illegal.**

We have two car parks at the school which are for staff use only and closed at drop off and pick up times. This is to ensure the safety of our students. The safety of our students is paramount. Our teachers will be speaking with all students to emphasise the road safety rules that must be adhered to around the school.

We thank you in advance for your cooperation with these matters and know that you will understand the importance of adhering to road safety rules around the school.

### Year 3/4 Bee Incursion

On Monday 27<sup>th</sup> of February, the Year 3/4 cohort enjoyed a wonderful Bee Incursion. Holly, from Holly's Backyard Bees, brought in an enclosed observation hive that the students were fascinated to see. It was a fully glassed in, cross-section of a hive, and the students particularly loved trying to spot the Queen Bee amongst all the worker and drone bees.

They got to try on a bee keeper's outfit and taste some delicious honey. They learned a lot about how hives operate and just how important bees are. Did you know that humans could only survive for 4 years in a world with no bees? There are many things we can do to help our diminishing bee population, such as planting bee friendly gardens and using less pesticides.



### Principal Morning Tea

You will see from our annual calendar that once again we are welcoming parents and carers from each year level to a morning tea hosted by the Principal Team. These social events give you the opportunity to meet with families from the same year level and also an informal time to meet and speak with the Principal Team whilst enjoying a coffee and morning refreshment. Drop in to the Hall from 9am on your child's year level date and stay as long or as short as you wish. We look forward to seeing you all there.

### Birthdays

Please can we ask that when celebrating Birthdays at school that **no food (no cakes, sweets, lollies, etc)**, whether store bought or home made, be brought to school to share with other students. We have a number of children with allergies and dietary conditions within the school and it is becoming increasingly difficult for teachers to monitor this.

By all means send in a token for birthdays such as stationery, toys and games to hand out to classmates, but no food. We thank you for your understanding.



## Chess Rules Australia – Friday Lunchtime Chess Club

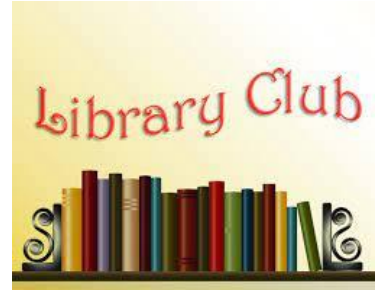
We are excited to welcome back Toni from Chess Rules Australia to continue running a lunchtime club again this year on Fridays for students who are interested in learning about and playing the game of chess. The cost is \$12 per session. Notices will be sent home with further details.



## Library Club Returns!

We are excited to announce the return of our Library Club in the coming weeks. Our Library Club will run during the first half of a lunchtime and will be limited to, 20 students within the library at any one time. We will begin with one session a week and hope to increase this as we gauge popularity.

It will offer a quiet place out of the yard to sit and read independently. Look out for the Compass post coming soon !



## CSEF (Camps, Sports and Excursions Fund)

CSEF will be provided by the Victorian Government to assist eligible families to cover the costs of school trips, camps and sporting activities. If you hold a valid concession card or are a temporary foster parent, you may be eligible for CSEF. The allowance will be paid to the school to use towards expenses relating to camps, excursions, or sporting activities for the benefit of your child.

### How to Apply

If you would like to apply, please complete an application form which can be found at:

<http://www.education.vic.gov.au/documents/about/programs/health/csefapplicationform.pdf>

For further information about CSEF, please visit:

<http://www.education.vic.gov.au/about/programs/health/Pages/csef.aspx>

Applications must be completed by the 9<sup>th</sup> March.

If you have any further enquiries, please contact the school office on 9802 3168.

*Natalie Grieve and Anthony Malelis*

# MOUNT WAVERLEY NORTH PS NEWSLETTER



## WHAT'S BEEN HAPPENING

### Welcome to Term 1 2023!

I am extremely excited to introduce myself as the new Director of Service at TeamKids. My name is Catherine and I'm overjoyed to be creating an engaging and thrilling program that will enrich every student's experience at before and after school care!

We have absolutely loved introducing all new students and Preps to the program in the first few weeks, with games and activities being planned to assist in developing relationships with their peers and developing both their fine and gross motor skills.

To begin the term, we had a Teddy Bear Picnic. This involved a healthy afternoon tea outside, where students engaged and socialised with both their peers and educators. Everyone loved seeing what teddy bears the group had!

TeamKids clubs have also begun. These clubs are a child-centred approach we utilise to plan activities centred around child interests.

### A few reminders:

- Please ensure that you're dropping your children off at the TeamKids room and signing them in for BSC sessions
- All children **must** be wearing and bringing a hat to TeamKids

## IMPORTANT DATES



### WEDNESDAY 1<sup>st</sup> MARCH

TK Goes Wild Party!

### FRIDAY 10<sup>th</sup> MARCH

Pupil Free Day – TeamKids Open until 6.30pm

### MONDAY 13<sup>th</sup> MARCH

Labour Day – TeamKids Closed

## TEAMKIDS CLUBS

ASC WEEK: **5-6**

### MONDAY

MINDFULNESS CLUB

### TUESDAY

LEGO MASTERS

### WEDNESDAY

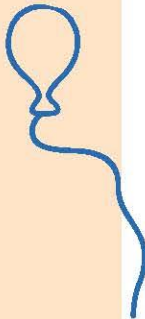
ART ATTACK CLUB

### THURSDAY

SUPER SPORTS CLUB

### FRIDAY

COOKING CLUB



**Service Mobile:** 0437 838 228

**Office Phone:** 1300 035 000

**Service Email:** [mountwaverleynorthps@teamkids.com.au](mailto:mountwaverleynorthps@teamkids.com.au)

**Office Email:** [info@teamkids.com.au](mailto:info@teamkids.com.au)



# School holiday camps on sale now!



**ROBLOX**

**LEGENDS**

**PLUS** YouTube Creators • Coding • Drones  
Animation • DJ • Minions • Jurassic World



12 - 14 April  
9:00 AM - 4:00 PM



Mount Waverley North  
Primary School

[www.codecamp.com.au/mtwaverley](http://www.codecamp.com.au/mtwaverley)

**SAVE \$25**

Use coupon code  
**EARLY25** at checkout

## Community Notices




**MUSIC LESSONS AT MWNPS**

**DRUM LESSONS 1:1:**  
Otto Mezzetti  
Ph: 0403 909 265  
ottomezzetti@gmail.com

**GUITAR LESSONS 1:1:**  
Scott Candlish  
Ph: 0437 078 521  
scottycandlish@live.com.au

**MusicCorp Group Lessons**  
Vocals, guitar, keyboard, flute, clarinet, violin etc.  
Ph: 1300 858 911  
www.musiccorp.com.au

All lessons are weekly, onsite during the school term & school hours!  
Weekly Rock Band practice



**ARTISTRY**  
**AESTHETIC GROUP GYMNASTICS @ SACRÉ COEUR**  
EVERY MONDAY & THURSDAY  
4.15-7.15PM IN THE HALL  
ENROL NOW - FREE TRIAL  
ALL WELCOME!

PH. 0412 504 054  
ARTISTRYAGG@IINET.NET.AU  
172 BURKE ROAD GLEN IRIS VIC  
www.artistryagg.com